

Easy Fence Panel

PRODUCT NO: **EF1010**

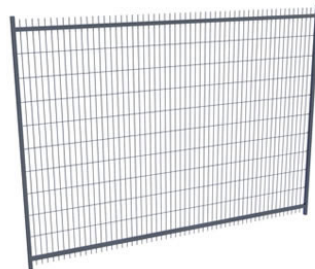
- 10' Wide x 6' High 'Easy Fence'
- ideal for Construction sites and Special Events
- hot dipped galvanized
- 16 gage 1.25" square metal tube frame for easy stacking
- heavy gauge welded wire mesh



Fence Storage Cradle

PRODUCT NO: **EFR20**

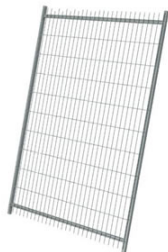
- Hot Dip Galvanized
- Holds 25 "Easy Fence" panels and all hardware on each cradle
- Stackable
- Reduces or eliminates handling costs on job sites and in yard.
- Easy to pick up with a fork lift



Security Fence Panel

PRODUCT NO: **F1010**

- 10' Wide x 7.5' High Spiked Security Fence
- ideal for Garden Center & Construction sites
- hot dipped galvanized
- 16 gauge 1.25" square metal tube frame for easy stacking
- heavy gauge welded wire mesh



Security Fence Panel

PRODUCT NO: **F1005**

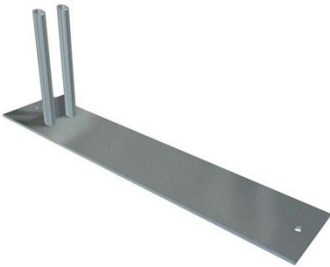
- 5' Wide x 7.5' High Spiked Security Fence
- ideal for Garden Center & Construction sites
- hot dipped galvanized
- 16 gauge 1.25" square metal tube frame for easy stacking
- heavy gauge welded wire mesh



Fence Connector

PRODUCT NO: **F2001**

- Fence Clamp
- 2 part bolt on clamp
- hot dipped galvanized
- clamp adds additional security to your set up due to unique design



Fence Support Base

PRODUCT NO: **F3001**

- Fence Support Base -heavy duty
- hot dipped galvanized, 6' x 24' with 2-20" uprights
- reduces tripping hazards
- easy to install



Gate Support Base

PRODUCT NO: **F3015**

- Gate Support Base - heavy duty, hot dipped galvanized, 6' x 24' with 2-20" uprights
- reduces tripping hazards sits flat on ground
- can be secured with spike or with skid (weight) on top of base
- Easy to install



Gate Hardware Set

PRODUCT NO: **F2003**

- Gate Hardware Set
- consists of wheel on 8" post plus U shaped bracket with square & round peg



Fence Wall Bracket

PRODUCT NO: **F6001**

- Fence Wall Bracket
- U bracket inserts into fence frame and can be attached to wall



Gate Chain

PRODUCT NO: **F2005**

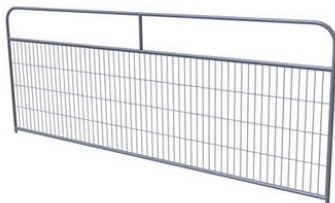
- Gate Chain
- 22" heavy duty galvanized chain to padlock gate.



Mesh Wind Screen

PRODUCT NO: **FM0520**

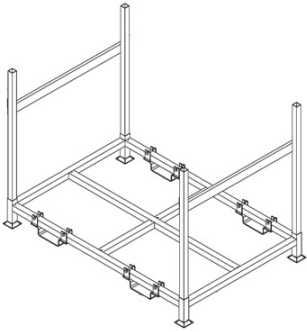
- Mesh Wind Screen
- c/w seat belt webbing sewn around edges
- grommets 2 ft o/c
- available in Green, Black & Red



Special Event Fence Panel

PRODUCT NO: **SEF410WM**

- 10' Wide x 4' High, Crowd Control Fence
- ideal for Special Events & Industrial work area separation
- hot dipped galvanized
- metal tube frame for easy stacking
- heavy gauge welded wire mesh
- compatible with SEFB-P (pipe base) & SEFB-F (flat base)



Storage Rack

PRODUCT NO: **SEFR**

*Hot Dip Galvanized Special Event Fence Storage Rack.
Will hold 40 panels of our SEF410WM special event fence
with 40 SEFB-P Bases*



Fence Base

PRODUCT NO: **SEFB-F**

- hot dip galvanized
- heavy duty base
- wieght and size of product allows for sturdy fence set up



Fence Base

PRODUCT NO: **SEFB-P**

- light duty fence base for our "special event fence system".
- ideal for turf areas
- hot dip galvanized



Safety Guard Fence

PRODUCT NO: **SGF1004**

- Engineer certified
- can be used with SGFB base or our multi purpose barrier fence post
- ideal for multi floor construction projects



Safety Guard Fence Base

PRODUCT NO: **SGFB**

- To be used with our SGF1004 safety guard rail fence system.
- Engineer certified system.
- 2 bases required per panel



Multi Purpose Barrier Fence

PRODUCT NO: **BFP02**

- Engineer certified
- designed to be used with our barrier guardrail systems
- corner post
- lumber can also be utilised



Multi Purpose Barrier Fence Post

PRODUCT NO: **BFP01**

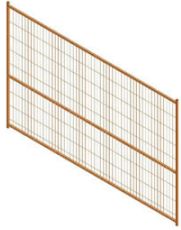
- Engineer certified
- to be used with our barrier guardrail systems
- width of barrier guardrail adjustable to any width
- lumber can be utilised in place of steel panels



Multi Purpose Barrier Clamping

PRODUCT NO: **BFP03**

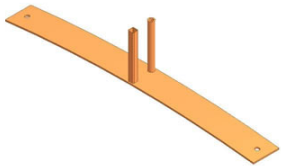
- Engineer certified
- clamps securely to edge of concrete floor
- to be used with our barrier guardrail systems
- width of barrier guardrail adjustable to any width
- lumber can be utilised in place of steel panels



Powder Coated Fence Panel

PRODUCT NO: **HV1010**

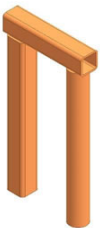
- Powder Coated Orange
- High Visibility Fence Panel
- 6' H X 10' L



Powder Coated Fence Base

PRODUCT NO: **HV3001**

- Powder Coated Orange
- High Visibility Fence Base



Powder Coated Fence Joint

PRODUCT NO: **HV2001**

- Powder Coated Orange
- High Visibility Fence Coupler



Fence Storage

PRODUCT NO: **HVR40**

High Visibility Fence Rack - Fits 40 Panels & Bases